



About

- Linen is a sustainable, thermoregulating and lightweight fabric.
- No label for limitless customisation.
- Slim fit.

100% linen. Knit. Straight fit. Half-circle in the back. V-shaped buttonless placket and collar in main material. Twin needle finish at cuffs and hem. Side slits with inner taped neck finish in main material.

 190 g/m² 

Sizes

 S M L XL XXL 3XL

More information

Logistic

 10

Country of origin

 40





BD - Bangladesh

Customs code



61059090

Colours

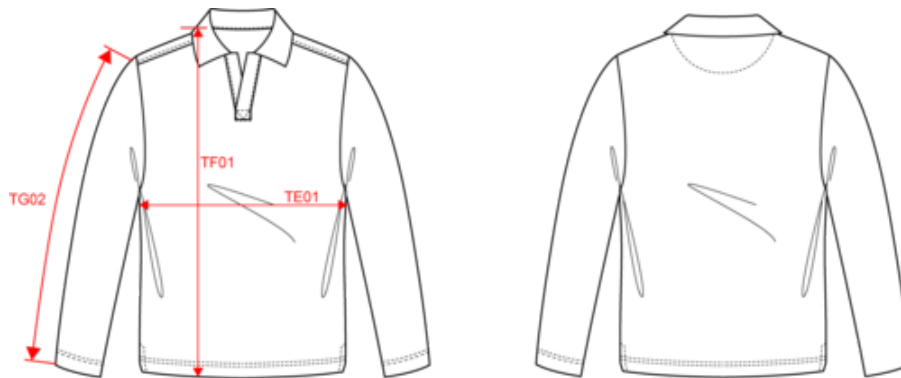
 Navy Blue  Wet Sand

Certifications



NS202
Eco-friendly men's long sleeve linen polo shirt

Dimensions (cm)



Measurements in cm	S	M	L	XL	XXL	3XL
TE01 - 1/2 chest width at 1.5cm below armhole	49.00	52.00	55.00	58.00	61.00	64.00
TF01 - Total height from HSP	68.00	70.00	72.00	74.00	76.00	78.00
TG02 - Long sleeve length	62.00	63.00	64.00	65.00	66.00	67.00

NS202

Eco-friendly men's long sleeve linen polo shirt

Colours information



Navy Blue
 RVB : 41,45,57
 Pantone C : 433C
 Pantone TCX : 19-4010TCX



Wet Sand
 RVB : 164,146,128
 Pantone C : 7536C
 Pantone TCX : 17-1312TCX

Logistic



10



40

Sizes	Width (cm)	Height (cm)	Length (cm)	Net weight (kg)	Gross weight (kg)	Pieces/Box	Pieces/Bundle
S	40.00000	20.00000	60.00000	0.00000	0.00000	40	10
M	40.00000	20.00000	60.00000	0.00000	0.00000	40	10
L	40.00000	20.00000	60.00000	0.00000	0.00000	40	10
XL	40.00000	20.00000	60.00000	0.00000	0.00000	40	10
XXL	40.00000	20.00000	60.00000	0.00000	0.00000	40	10
3XL	40.00000	20.00000	60.00000	0.00000	0.00000	40	10