



About

- Made from linen, a lightweight and breathable material.
- No label: 100% customisable for your brand.
- Fashionable dropped sleeves.

100 % linen. Straight fit with dropped sleeves. Side slits with swallowtail finish. Collar with collar stand and V-shaped buttonless polo shirt placket in main material. Double over stitching on cuffs and bottom hem. Half-circle in the back.

 190 g/m² 

Sizes

 XS S M L

More information

Logistic

 10

Country of origin

 50



BD - Bangladesh

Customs code



61069050

Colours

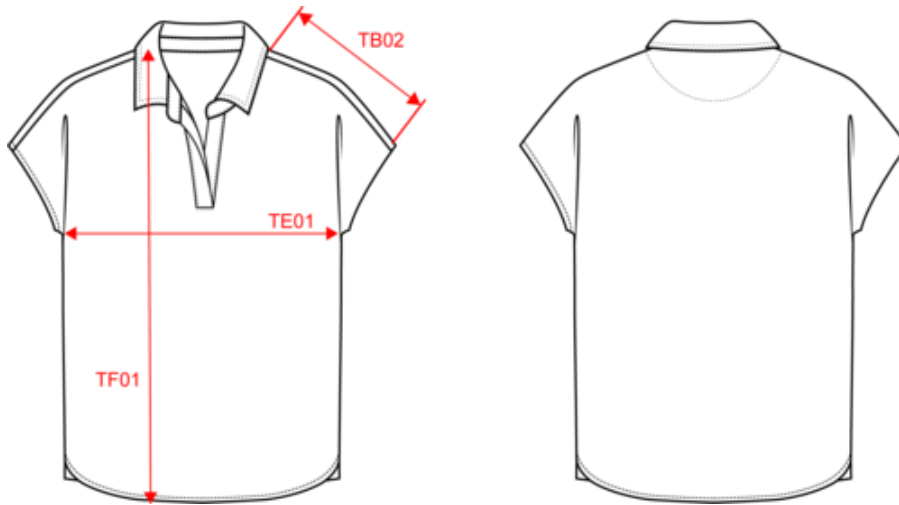
 Black
  Ivory
  Light Olive Green
  Navy Blue
  Organic Khaki
  Peacock Blue
  Stone Grey
  Wet Sand

Certifications



NS221
Ladies' linen polo shirt

Dimensions (cm)



Measurements in cm	XS	S	M	L
TB02 - Shoulder length	25.50	26.50	27.50	28.50
TE01 - 1/2 chest width at 1.5cm below armhole	48.50	51.50	54.50	57.50
TF01 - Total height from HSP	65.00	67.00	69.00	71.00

NS221

Ladies' linen polo shirt

Colours information



Black
 RVB : 35,35,37
 Pantone C : Black
 Pantone TCX : 19-4004TCX



Ivory
 RVB : 236,231,218
 Pantone C : 7534C
 Pantone TCX : 11-0701TCX



Light Olive Green
 RVB : 120,112,89
 Pantone C : 7497C
 Pantone TCX : 17-0517TCX



Navy Blue
 RVB : 41,45,57
 Pantone C : 433C
 Pantone TCX : 19-4010TCX



Organic Khaki
 RVB : 85,87,76
 Pantone C : 418C
 Pantone TCX : 19-0312TCX



Peacock Blue
 RVB : 34,57,75
 Pantone C : 7546C
 Pantone TCX : 19-4125TCX



Stone Grey
 RVB : 77,70,68
 Pantone C : Black 7C
 Pantone TCX : 19-0405TCX



Wet Sand
 RVB : 164,146,128
 Pantone C : 7536C
 Pantone TCX : 17-1312TCX

Logistic



Sizes	Width (cm)	Height (cm)	Length (cm)	Net weight (kg)	Gross weight (kg)	Pieces/Box	Pieces/Bundle
XS	40.00000	20.00000	60.00000	7.75000	9.05000	50	10
S	40.00000	20.00000	60.00000	8.25000	9.55000	50	0
M	40.00000	20.00000	60.00000	8.75000	10.05000	50	10
L	40.00000	20.00000	60.00000	9.25000	10.55000	50	10