



**About**

- Made from more eco-friendly and more ethical organic cotton.
- Regular and trendy fit.
- Perfectly smooth surface for optimum customisation.

100 % organic cotton. Ringspun combed cotton. Slub-look jersey fabric. Regular fit. Side stitching. Raw edge wide neck in main material. Inner taped neck in main material. Twin needle finish at cuffs and hem. Garment washed after assembly: colours may vary slightly.

 130 g/m<sup>2</sup> 

**Sizes**

 XS S M L XL XXL

**More information**

**Logistic**

 10

**Country of origin**

 50



BD - Bangladesh

**Customs code**

 61091000

**Colours**

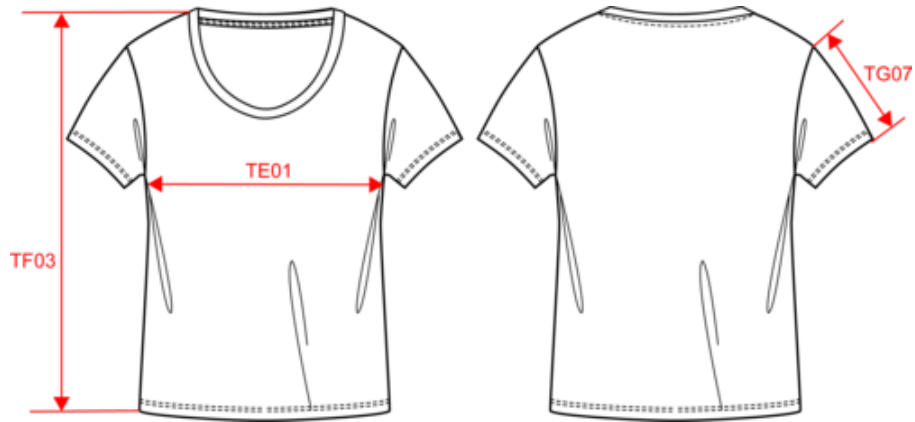
 Black
  Jade Green
  Mineral Grey
  Navy Blue
  White

**Certifications**



**NS329**  
Eco-friendly ladies' slub t-shirt

Dimensions (cm)



Measurements in cm	XS	S	M	L	XL	XXL
TE01 - 1/2 chest width at 1.5cm below armhole	45.00	48.00	51.00	54.00	57.00	60.00
TF03 - Front total height from HSP	62.00	64.00	66.00	68.00	70.00	72.00
TG07 - Short sleeve length	16.00	16.75	17.50	18.25	19.00	19.75

# NS329

## Eco-friendly ladies' slub t-shirt

### Colours information



**Black**  
 RVB : 35,35,37  
 Pantone C : Black  
 Pantone TCX : 19-4004TCX



**Jade Green**  
 RVB : 143,167,162  
 Pantone C : 5575C  
 Pantone TCX : 16-5106TCX



**Mineral Grey**  
 RVB : 94,104,116  
 Pantone C : 431C  
 Pantone TCX : 18-4215TCX



**Navy Blue**  
 RVB : 41,45,57  
 Pantone C : 433C  
 Pantone TCX : 19-4010TCX



**White**  
 RVB : 236,236,252  
 Pantone C : White  
 Pantone TCX : 11-0601TCX

### Logistic



10



50

Sizes	Width (cm)	Height (cm)	Length (cm)	Net weight (kg)	Gross weight (kg)	Pieces/Box	Pieces/Bundle
XS	40.00	14.00	60.00	5.00000	6.17000	50	10
S	40.00	14.00	60.00	5.25000	6.42000	50	10
M	40.00	14.00	60.00	5.50000	6.67000	50	10
L	40.00	14.00	60.00	6.25000	7.42000	50	10
XL	40.00	14.00	60.00	6.75000	7.92000	50	10
XXL	40.00	14.00	60.00	7.25000	8.42000	50	10