



**About**

- Comfortable and breathable towelling material.
- Made in Portugal.
- No label: 100% customisable to your brand.

80% organic cotton / 20% post-consumer recycled polyester. Made in Portugal. Combed cotton. Towelling fabric. Straight fit with dropped shoulders. Made in Portugal. Enzyme-washed. 1x1 ribbed neckline. Tone-on-tone herringbone taped neckline. Double over stitching on cuffs and hem. Half-circle at the back. Reinforced shoulders.

 210 g/m<sup>2</sup>

**Sizes**



**More information**

**Logistic**



5



30



**Country of origin**

PT - Portugal

**Customs code**



61044200

**Colours**



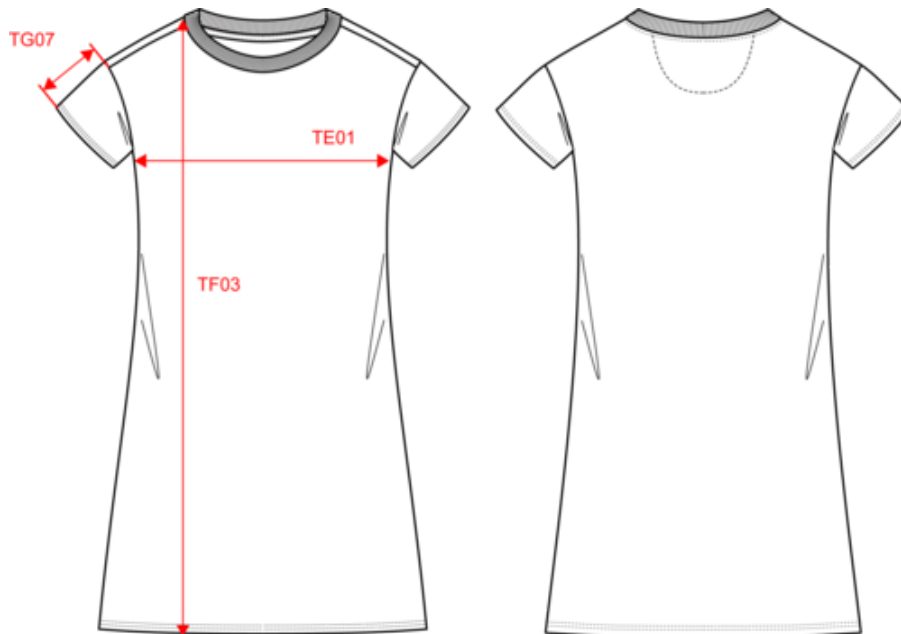
**Certifications**



Made with 80% Organic materials  
Certified by Ecocert Greenlife.  
EGL N°195651 / NATIVE SPIRIT



Dimensions (cm)



Measurements in cm	XS	S	M	L	XL
TE01 - 1/2 chest width at 1.5cm below armhole	43.00	46.00	49.00	52.00	55.00
TF03 - Front total height from HSP	83.00	86.00	89.00	92.00	95.00
TG07 - Short sleeve length	13.50	14.25	15.00	15.75	16.50

# NS5028

## Eco-friendly ladie's Terry Towel dropped shoulders t-shirt dress

### Colours information



**Ivory**  
 RVB : 236,231,218  
 Pantone C : 7534C  
 Pantone TCX : 11-0701TCX



**Malachite Green**  
 RVB : 0,111,83  
 Pantone C : 335C  
 Pantone TCX : 18-5338TCX



**Pomelo**  
 RVB : 179,97,81  
 Pantone C : 7522C  
 Pantone TCX : 17-1532TCX

### Logistic



5



30

Sizes	Width (cm)	Height (cm)	Length (cm)	Net weight (kg)	Gross weight (kg)	Pieces/Box	Pieces/Bundle
XS	40.00000	40.00000	60.00000	7.65000	7.29000	30	5
S	40.00000	40.00000	60.00000	8.00000	7.64000	30	5
M	40.00000	40.00000	60.00000	8.49000	8.13000	30	5
L	40.00000	40.00000	60.00000	9.10000	8.74000	30	5
XL	40.00000	40.00000	60.00000	10.35000	9.99000	30	5