

## NS509



### Men's linen shirt with bowling neckline




#### About

- Linen is a sustainable, thermoregulating and lightweight fabric
- No label for limitless customisation
- Fashionable and comfortable

100% linen. Woven. Straight fit. Bowling neckline. Lined back yoke. Single needle finish at cuffs and hem. Placket with recycled plastic pearlised effect contrasting buttons, with a facing inner finish. Garment washed after assembly: colours may vary from item to item.

 125 g/m<sup>2</sup> 

#### Sizes

 XS S M L XL XXL 3XL

#### More information

##### Logistic

 1

##### Country of origin

 25



BD - Bangladesh

##### Customs code



62059010

#### Colours

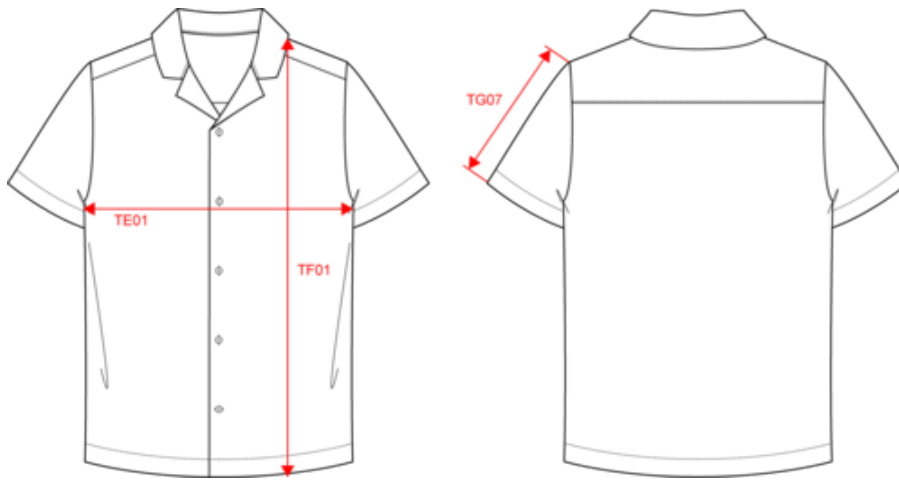
   
Linen Linen Blue

#### Certifications



**NS509**  
Men's linen shirt with bowling neckline

Dimensions (cm)




Measurements in cm	XS	S	M	L	XL	XXL	3XL
TE01 - 1/2 chest width at 1.5cm below armhole	47.00	50.00	53.00	56.00	59.00	62.00	65.00
TF01 - Total height from HSP	69.00	71.00	73.00	75.00	77.00	79.00	81.00
TG07 - Short sleeve length	22.45	23.20	23.95	24.70	25.45	26.20	26.95

# NS509

## Men's linen shirt with bowling neckline

### Colours information

 **Linen**  
 RVB : 193,182,170  
 Pantone C : 7535C  
 Pantone TCX : 13-0403TCX

 **Linen Blue**  
 RVB : 149,167,194  
 Pantone C : 536C  
 Pantone TCX : 15-3915TCX

### Logistic



1



25

Sizes	Width (cm)	Height (cm)	Length (cm)	Net weight (kg)	Gross weight (kg)	Pieces/Box	Pieces/Bundle
XS	40.00000	15.00000	60.00000	4.30000	5.80000	25	1
S	40.00000	15.00000	60.00000	4.50000	6.00000	25	1
M	40.00000	15.00000	60.00000	5.00000	6.50000	25	1
L	40.00000	15.00000	60.00000	5.30000	6.80000	25	1
XL	40.00000	17.00000	60.00000	5.50000	7.00000	25	1
XXL	40.00000	17.00000	60.00000	5.80000	7.30000	25	1
3XL	40.00000	17.00000	60.00000	6.00000	7.50000	25	1