



**About**

- Made from a blend of responsible materials.
- Breathable and hard-wearing fabric.
- No label: 100% customisable for your project.

60 % TENCEL™\* Lyocell / 40 % organic cotton. \*TENCEL™ is a trademark of Lenzing AG. Slightly flared loose cut. Enzyme-washed product. Tone-on-tone recycled plastic buttons. Long sleeves with two pleats. Panel on back. Two back pleats. Buttoned cuffs with slits. Garment washed after assembly; colours may vary slightly. The colour may rub off on contact with light surfaces or clothing.

 125 g/m<sup>2</sup> 

**Sizes**



**More information**

**Logistic**



1



25



**Country of origin**

BD - Bangladesh

**Customs code**



62064000

**Colours**

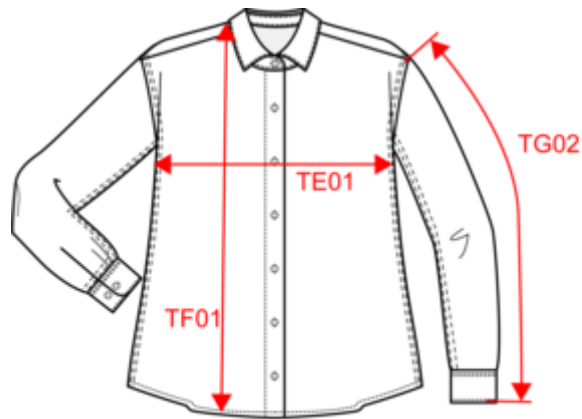


**Certifications**



**NS515**  
Eco-friendly ladies' lyocell shirt

Dimensions (cm)




Measurements in cm	XS	S	M	L	XL
TE01 - 1/2 chest width at 1.5cm below armhole	50.50	53.50	56.50	59.50	62.50
TF01 - Total height from HSP	68.00	70.00	72.00	74.00	76.00
TG02 - Long sleeve length	51.00	52.00	53.00	54.00	55.00

# NS515

## Eco-friendly ladies' lyocell shirt

### Colours information

 **Washed Dark Navy**  
 RVB : 39,40,49  
 Pantone C : 426C  
 Pantone TCX : 19-4011TCX

 **Washed Organic Khaki**  
 RVB : 85,89,77  
 Pantone C : 418C  
 Pantone TCX : 19-0312TCX

 **Washed white**  
 RVB : 240,238,248  
 Pantone C : Cool Gray 1C  
 Pantone TCX : 13-4105TCX

### Logistic



1



25

Sizes	Width (cm)	Height (cm)	Length (cm)	Net weight (kg)	Gross weight (kg)	Pieces/Box	Pieces/Bundle
XS	40.00	19.00	60.00	7.10000	8.50000	25	0
S	40.00	19.00	60.00	7.10000	8.50000	25	0
M	40.00	19.00	60.00	7.10000	8.50000	25	0
L	40.00	19.00	60.00	7.10000	8.50000	25	0
XL	40.00	19.00	60.00	7.10000	8.50000	25	0