

**NS524**  
Eco-friendly ladies' linen blouse



**About**

- Sustainable, thermoregulating and lightweight fabric.
- No label for limitless customisation.
- Fashionable and hard-wearing.

100% linen. Woven. Comfort fit with dropped shoulders. Armholes with gathers on top. V-neck and placket with stitched bias finish and ribbed stitching. Gathered cuffs, slit with fastened doghouse placket and recycled plastic button. Garment washed after assembly: colours may vary from item to item. Certification in progress.

 125 g/m<sup>2</sup>

**Sizes**



**More information**

**Logistic**



1



25



**Country of origin**

BD - Bangladesh

**Customs code**



62069010

**Colours**



Organic Khaki

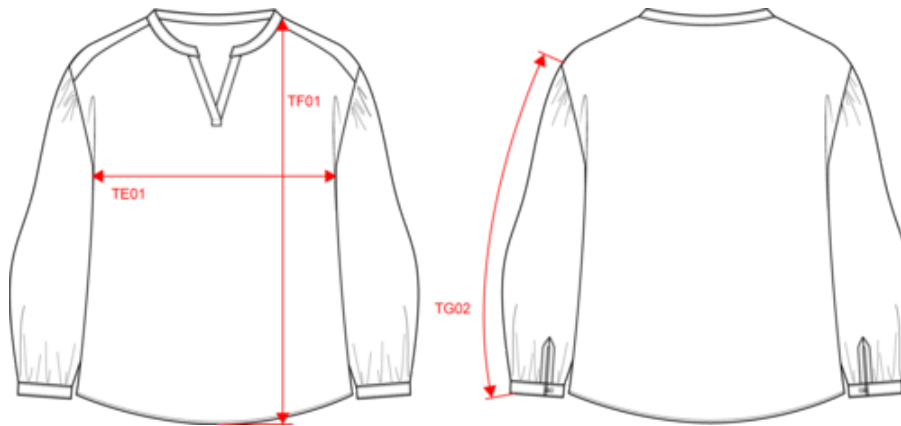
White

**Certifications**



**NS524**  
Eco-friendly ladies' linen blouse

Dimensions (cm)



Measurements in cm	XS	S	M	L	XL
TE01 - 1/2 chest width at 1.5cm below armhole	47.00	50.00	53.00	56.00	59.00
TF01 - Total height from HSP	60.00	62.00	64.00	66.00	68.00
TG02 - Long sleeve length	50.25	51.25	52.25	53.25	54.25

**NS524**  
Eco-friendly ladies' linen blouse

**Colours information**

**Organic Khaki**

RVB : 85,87,76  
Pantone C : 418C  
Pantone TCX : 19-0312TCX



**White**

RVB : 236,236,252  
Pantone C : White  
Pantone TCX : 11-0601TCX

**Logistic**



1



25

Sizes	Width (cm)	Height (cm)	Length (cm)	Net weight (kg)	Gross weight (kg)	Pieces/Box	Pieces/Bundle
XS	40.00000	15.00000	60.00000	3.70000	5.20000	25	1
S	40.00000	15.00000	60.00000	3.90000	5.40000	25	1
M	40.00000	15.00000	60.00000	4.10000	5.60000	25	1
L	40.00000	15.00000	60.00000	4.50000	6.00000	25	1
XL	40.00000	15.00000	60.00000	4.70000	6.20000	25	1