



**About**

- Hard-wearing and comfortable material.
- No label: 100% customisable for your project.
- Quality finishes.

90 % organic cotton / 10 % hemp. Cotton twill. Regular fit. Recycled metal buttons. Natural (undyed) fabric with an authentic appearance. Enzyme-washed product. Two chest pockets with flap and button. Button placket on the rear hem. Two piped pockets at the front sides. Front and back panels. Sleeves with slit and buttoned cuffs. Raw Natural is distinguished by its raw, visually textured appearance, dotted with fine particles visible to the naked eye.

 370 g/m<sup>2</sup> 

**Sizes**



**More information**

**Logistic**



**Country of origin**



BD - Bangladesh

**Customs code**



62023010

**Colours**

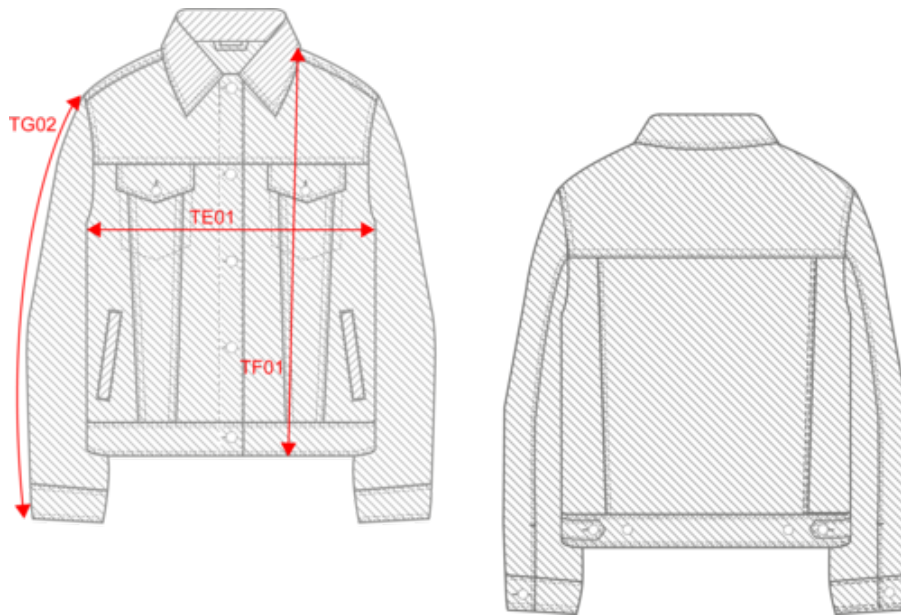


**Certifications**



**NS607**  
Eco-friendly ladies' hemp jacket

**Dimensions (cm)**



Measurements in cm	XS	S	M	L	XL
TE01 - 1/2 chest width at 1.5cm below armhole	45.50	48.50	51.50	54.50	57.50
TF01 - Total height from HSP	58.50	60.50	62.50	64.50	66.50
TG02 - Long sleeve length	61.00	62.00	63.00	64.00	65.00

**Colours information**



**Raw Natural**  
RVB : 215,201,179  
Pantone C : Based on 7500C  
Pantone TCX : Based on 13-10006TCX

**Logistic**



1



10

Sizes	Width (cm)	Height (cm)	Length (cm)	Net weight (kg)	Gross weight (kg)	Pieces/Box	Pieces/Bundle
XS	40.00	17.00	60.00	6.00000	6.60000	10	1
S	40.00	17.00	60.00	6.40000	7.00000	10	1
M	40.00	17.00	60.00	6.80000	7.40000	10	1
L	40.00	19.00	60.00	7.20000	7.80000	10	1
XL	40.00	19.00	60.00	7.60000	8.20000	10	1