



**About**

- Made from recycled material.
- Waterproof and breathable fabric.
- No label: 100% customisable for your project.

100 % post-consumer recycled polyester. Regular fit. Waterproof 4000 mm. Breathable 3000gsm/24h. Recycled waterproof zip with recycled metal zip puller. Fabric with inner membrane and heat sealed seams for waterproof properties. Two piped pockets with reverse zip. Hood with drawstring. Elasticated cuffs.

 100 g/m<sup>2</sup> 

**Sizes**

 XXS XS S M L XL XXL 3XL 4XL

**More information**

**Logistic**



**Country of origin**



BD - Bangladesh

**Customs code**



62024010

**Colours**

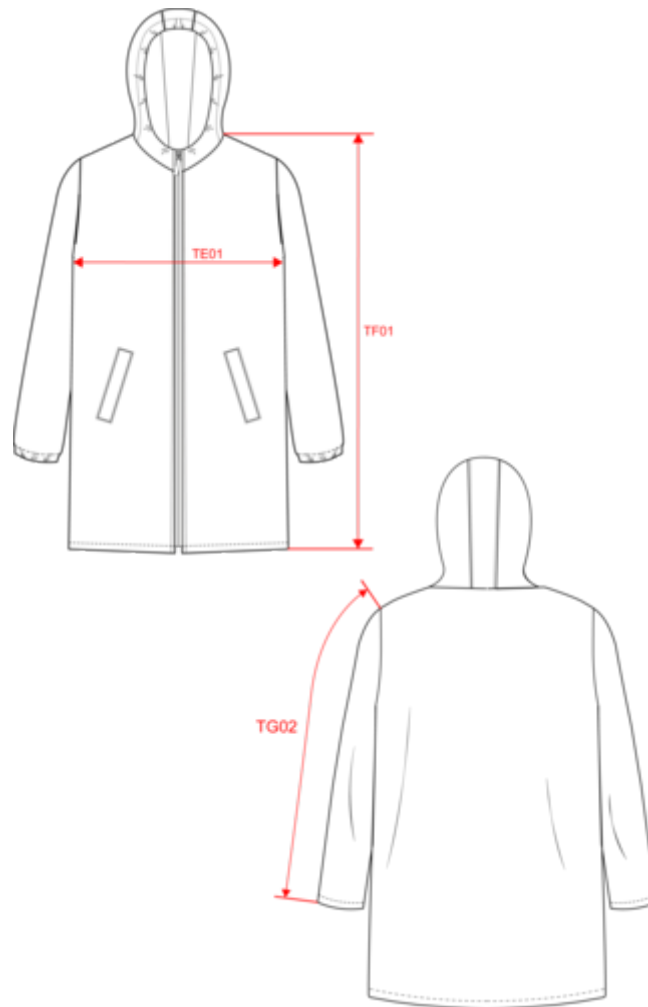


**Certifications**



**NS615**  
Eco-friendly unisex waterproof jacket

**Dimensions (cm)**



Measurements in cm	XXS	XS	S	M	L	XL	XXL	3XL	4XL
TE01 - 1/2 chest width at 1.5cm below armhole	49.00	52.00	55.00	58.00	61.00	64.00	67.00	70.00	73.00
TF01 - Total height from HSP	83.00	85.00	87.00	89.00	91.00	93.00	95.00	97.00	99.00
TG02 - Long sleeve length	61.50	62.50	63.50	64.50	65.50	66.50	67.50	68.50	69.50

# NS615

## Eco-friendly unisex waterproof jacket

### Colours information



**Black**  
 RVB : 35,35,37  
 Pantone C : Black  
 Pantone TCX : 19-4004TCX



**Navy Blue**  
 RVB : 41,45,57  
 Pantone C : 433C  
 Pantone TCX : 19-4010TCX



**Organic Khaki**  
 RVB : 85,87,76  
 Pantone C : 418C  
 Pantone TCX : 19-0312TCX



**Wet Sand**  
 RVB : 164,146,128  
 Pantone C : 7536C  
 Pantone TCX : 17-1312TCX

### Logistic



1



15

Sizes	Width (cm)	Height (cm)	Length (cm)	Net weight (kg)	Gross weight (kg)	Pieces/Box	Pieces/Bundle
XXS	40.00	35.00	60.00	5.50000	4.00000	15	1
XS	40.00	35.00	60.00	5.60000	4.10000	15	1
S	40.00	35.00	60.00	0.00000	4.30000	15	1
M	40.00	35.00	60.00	6.00000	4.50000	15	1
L	40.00	35.00	60.00	6.30000	4.70000	15	1
XL	40.00	38.00	60.00	6.50000	5.00000	15	1
XXL	40.00	38.00	60.00	6.80000	5.30000	15	1
3XL	40.00	38.00	60.00	7.10000	5.60000	15	1
4XL	40.00	38.00	60.00	7.50000	6.00000	15	1