




About

- Sustainable, thermoregulating and lightweight fabric.
- No label for limitless customisation.
- Fashionable and hard-wearing.

100% linen. Woven. Waistband with loops and inner waistband finish with contrasting navy blue French seam. Fly with recycled plastic marble-effect buttons and recycled metal zip. Two front pockets with over stitching. Two piped pockets on the back with recycled plastic marble-effect buttons. Front and back pocket background in tone-on-tone herringbone. Rib stitching on the front and back for added reinforcement. Single over stitching on the leg hem. Garment washed after assembly: colours may vary from item to item.

 210 g/m² 

Sizes

 26 UK (36 FR) 28 UK (38 FR) 30 UK (40 FR) 32 UK (42 FR) 34 UK (44 FR) 36 UK (46 FR) 38 UK (48 FR) 40 UK (50 FR)

More information

Logistic

 1

Country of origin






BD - Bangladesh

Customs code



62034990

Colours

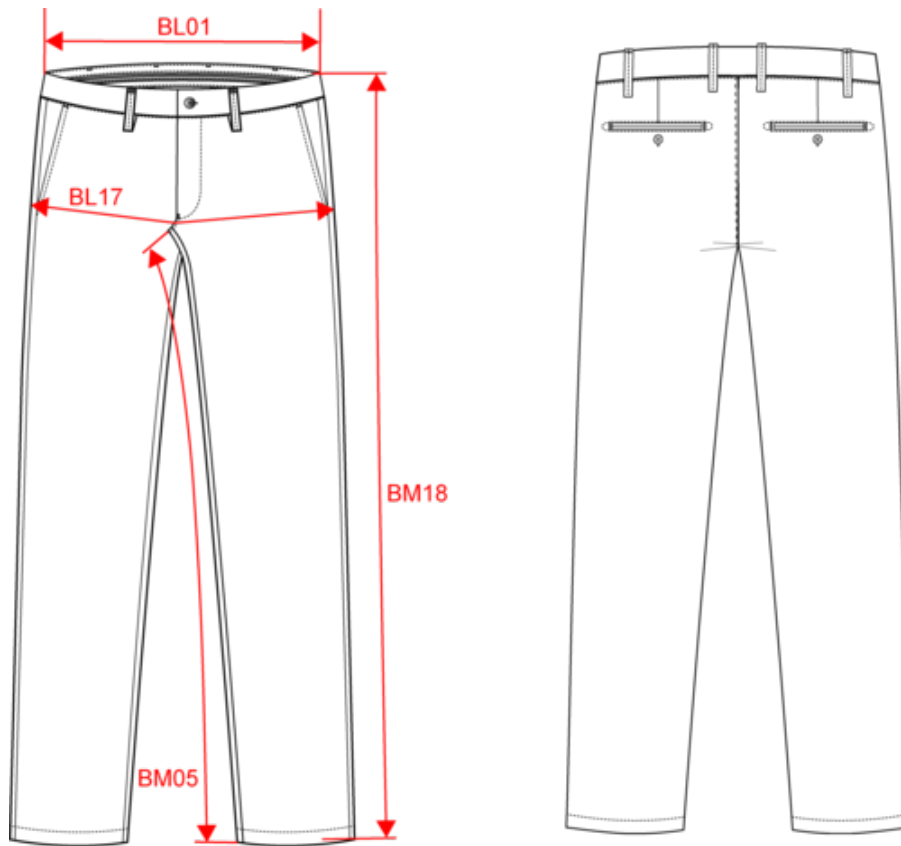
  
Linen Sand Navy Blue White

Certifications



NS710
Men's linen trousers

Dimensions (cm)



Measurements in cm	36 FR	38 FR	40 FR	42 FR	44 FR	46 FR	48 FR	50 FR
BL01 - 1/2 waist width (buttoned up and front band over back band)	38.50	40.50	42.50	44.50	46.50	49.00	51.50	54.00
BL17 - 1/2 hip width (measured parallel to waistband)	46.50	48.50	50.50	52.50	54.50	56.50	58.50	60.50
BM05 - Inseam length	85.00	85.00	85.00	85.00	85.00	85.00	85.00	85.00
BM18 - Side length (waistband included)	105.00	105.50	106.00	106.50	107.00	107.50	108.00	108.50

NS710

Men's linen trousers

Colours information



Linen Sand
 RVB : 198,191,178
 Pantone C : 13-0403TCX
 Pantone TCX : 7535C



Navy Blue
 RVB : 41,45,57
 Pantone C : 433C
 Pantone TCX : 19-4010TCX



White
 RVB : 236,236,252
 Pantone C : White
 Pantone TCX : 11-0601TCX

Logistic



1



20

Sizes	Width (cm)	Height (cm)	Length (cm)	Net weight (kg)	Gross weight (kg)	Pieces/Box	Pieces/Bundle
36 FR	40.00000	17.00000	60.00000	7.80000	8.40000	20	1
38 FR	40.00000	17.00000	60.00000	8.00000	8.60000	20	1
40 FR	40.00000	17.00000	60.00000	8.10000	8.80000	20	1
42 FR	40.00000	17.00000	60.00000	8.20000	8.90000	20	1
44 FR	40.00000	17.00000	60.00000	8.40000	9.10000	20	1
46 FR	40.00000	17.00000	60.00000	8.60000	9.30000	20	1
48 FR	40.00000	17.00000	60.00000	8.62000	9.32000	20	1
50 FR	40.00000	17.00000	60.00000	8.80000	9.50000	20	1