




**About**

- Sustainable, thermoregulating and lightweight fabric.
- No label for limitless customisation.
- Fashionable and hard-wearing.

100% linen. Woven. Waistband with loops. Inner waistband finished with a contrasting navy blue tape on the Linen Sand colour and tone-on-tone on the White colour. Fly with recycled plastic marble-effect buttons and recycled metal zip. Two front pleats with a permanent leg pleat front and back. Two front pockets and two false piped back pockets. Tone-on-tone herringbone front pocket backgrounds. Rib stitching on the front and back for added reinforcement. Invisible leg hem finish. Garment washed after assembly: colours may vary from item to item.

 210 g/m<sup>2</sup> 

**Sizes**

 8 UK (34 FR) 10 UK (36 FR) 12 UK (38 FR) 14 UK (40 FR) 16 UK (42 FR) 18 UK (44 FR)

**More information**

**Logistic**



BD - Bangladesh

**Customs code**



62046990

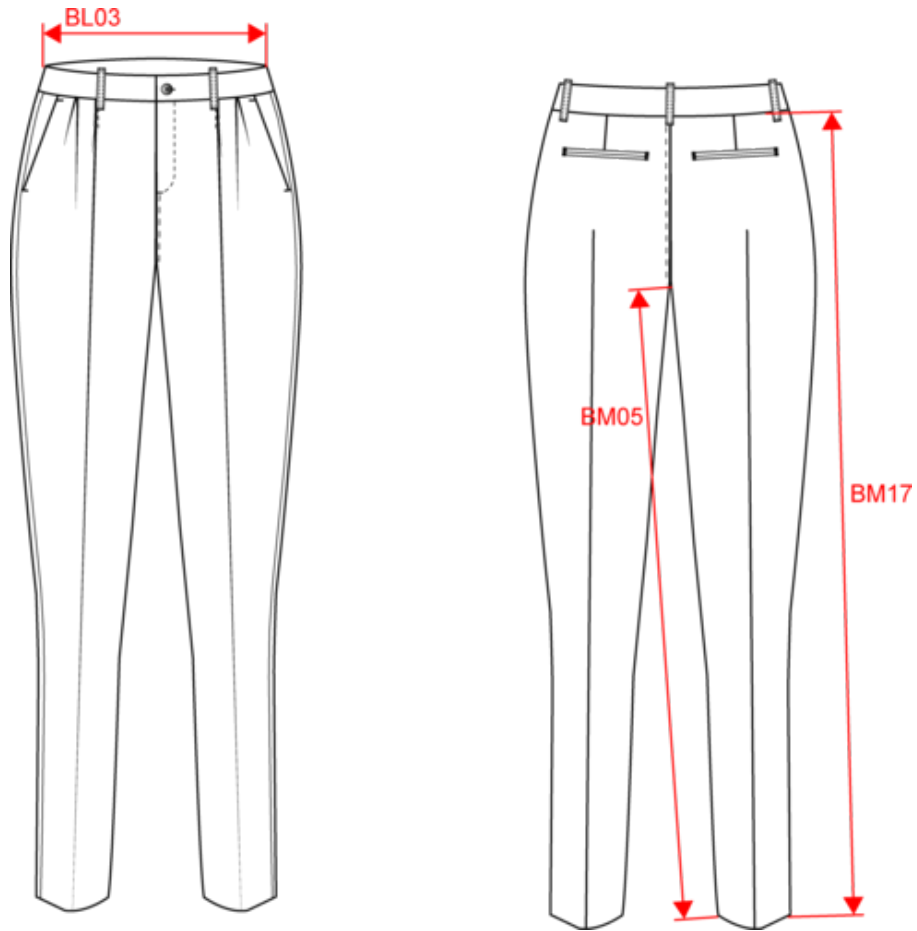
**Colours**



**Certifications**



Dimensions (cm)



Measurements in cm	34 FR	36 FR	38 FR	40 FR	42 FR	44 FR
BL01 - 1/2 waist width (buttoned up and front band over back band)	35.00	37.00	39.00	41.00	43.00	45.00
BL17 - 1/2 hip width (measured parallel to waistband)	47.00	49.00	51.00	53.00	55.00	57.00
BM05 - Inseam length	76.50	76.50	76.50	76.50	76.50	76.50
BM17 - Side length (waistband excluded)	95.75	96.25	96.75	97.25	97.75	98.25

Colours information

 **Linen Sand**  
RVB : 198,191,178  
Pantone C : 13-0403TCX  
Pantone TCX : 7535C

 **White**  
RVB : 236,236,252  
Pantone C : White  
Pantone TCX : 11-0601TCX

Logistic



1



20

Sizes	Width (cm)	Height (cm)	Length (cm)	Net weight (kg)	Gross weight (kg)	Pieces/Box	Pieces/Bundle
34 FR	40.00000	17.00000	60.00000	7.80000	8.40000	20	1
36 FR	40.00000	17.00000	60.00000	8.00000	8.60000	20	1
38 FR	40.00000	17.00000	60.00000	8.10000	8.80000	20	1
40 FR	40.00000	17.00000	60.00000	8.20000	8.90000	20	1
42 FR	40.00000	17.00000	60.00000	8.40000	9.10000	20	1
44 FR	40.00000	17.00000	60.00000	8.60000	9.30000	20	1