



About

- Made from a blend of responsible materials.
- Made from Lyocell, an eco-friendly plant fibre
- Regular and trendy fit.

65 % TENCEL™* Lyocell / 35 % organic cotton. *TENCEL™ is a trademark of Lenzing AG. Casual cut. Peach-skin feel finish. Elasticated waist with drawstring and metal tips. Two piped front and back pockets. Reinforced pocket corners. Rib stitching on the front, back, sides and crotch. Garment dyed as a whole after assembly; colours may vary between products. The colour may rub off on contact with light surfaces or clothing.

 190 g/m² 

Sizes



More information

Logistic



1



15



Country of origin

BD - Bangladesh

Customs code



62046918

Colours



Washed
Navy
Blue

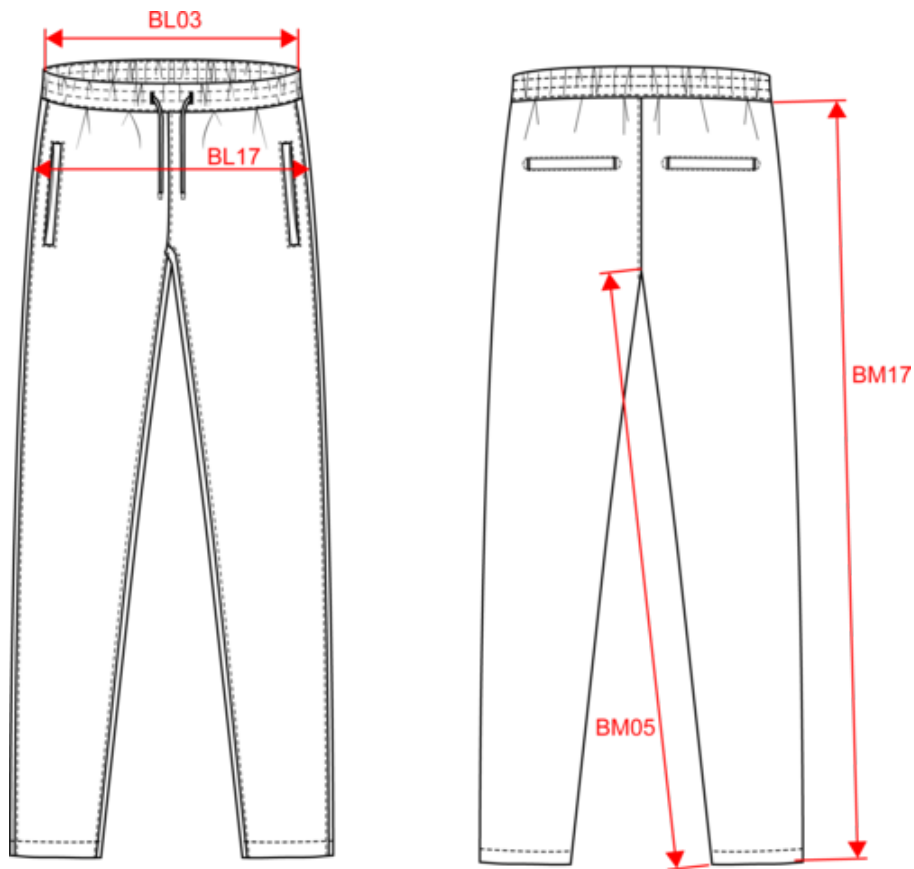
Washed
Organic
Khaki

Washed
Wet
Sand

Certifications



Dimensions (cm)



Measurements in cm	XS	S	M	L	XL	XXL
BL03 - 1/2 elasticated waist width relaxed (front over back)	32.00	35.00	38.00	41.00	44.00	47.00
BL17 - 1/2 hip width (measured parallel to waistband)	49.00	52.00	55.00	58.00	61.00	64.00
BM05 - Inseam length	79.50	79.50	79.50	79.50	79.50	79.50
BM17 - Side length (waistband excluded)	98.50	99.25	100.00	100.75	101.50	102.25

NS724

Eco-friendly ladies' washed effect lyocell trousers

Colours information

 **Washed Navy Blue**
 RVB : 54,61,75
 Pantone C : 432C
 Pantone TCX : 19-4023TCX

 **Washed Organic Khaki**
 RVB : 85,89,77
 Pantone C : 418C
 Pantone TCX : 19-0312TCX

 **Washed Wet Sand**
 RVB : 159,141,119
 Pantone C : 7504C
 Pantone TCX : 17-1312TCX

Logistic



1



15

Sizes	Width (cm)	Height (cm)	Length (cm)	Net weight (kg)	Gross weight (kg)	Pieces/Box	Pieces/Bundle
XS	40.00000	16.00000	60.00000	5.05000	6.45000	15	1
S	40.00000	16.00000	60.00000	5.25000	6.65000	15	1
M	40.00000	16.00000	60.00000	5.55000	6.95000	15	1
L	40.00000	16.00000	60.00000	5.85000	7.25000	15	1
XL	40.00000	16.00000	60.00000	6.00000	7.40000	15	1
XXL	40.00000	17.00000	60.00000	7.65000	7.65000	15	1