

# NS725

Eco-friendly ladies' washed effect lyocell shorts



### About

- No label: 100% customisable for your project.
- Breathable and hard-wearing fabric.
- Flared fit for greater comfort.

100 % TENCEL™\* Lyocell. \*TENCEL™ is a trademark of Lenzing AG. Slightly flared cut. Waistband semi-elasticated at the back for extra comfort. Two piped back pockets with reinforced corners. Two side pockets. Rib stitching on the front, back, sides and crotch. Two front darts. Garment dyed after assembly: colours may vary between products. The colour may rub off on contact with light surfaces or clothing.

 195 g/m<sup>2</sup> 

### Sizes



### More information

#### Logistic



1



20



#### Country of origin

BD - Bangladesh

#### Customs code



62046950

### Colours



Washed  
Navy  
Blue



Washed  
Organic  
Khaki

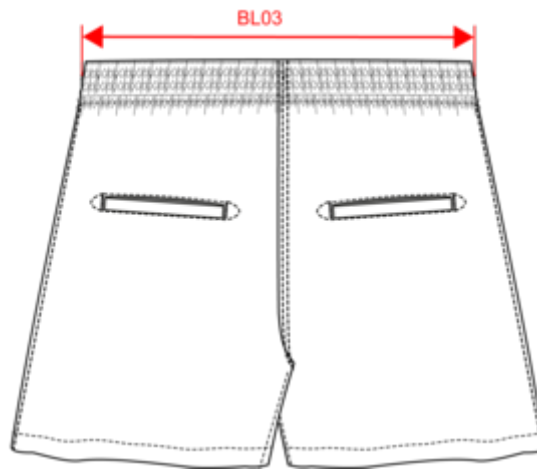
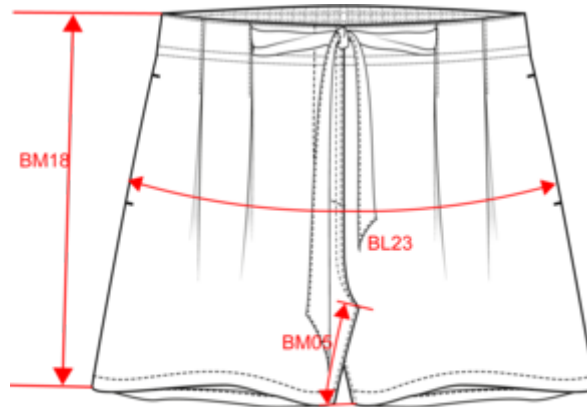
### Certifications



## NS725

Eco-friendly ladies' washed effect lyocell shorts

Dimensions (cm)



Measurements in cm	XS	S	M	L	XL
BL03 - 1/2 elasticated waist width relaxed (front over back)	31.50	34.50	37.50	40.50	43.50
BL23 - 1/2 hip width pleats closed	45.00	48.00	51.00	54.00	57.00
BM05 - Inseam length	7.00	7.50	7.50	8.00	8.00
BM18 - Side length (waistband included)	35.00	36.25	37.00	38.25	39.00

# NS725

Eco-friendly ladies' washed effect lyocell shorts

## Colours information

### Washed Navy Blue

RVB : 54,61,75  
 Pantone C : 432C  
 Pantone TCX : 19-4023TCX

### Washed Organic Khaki

RVB : 85,89,77  
 Pantone C : 418C  
 Pantone TCX : 19-0312TCX

## Logistic



1



20

Sizes	Width (cm)	Height (cm)	Length (cm)	Net weight (kg)	Gross weight (kg)	Pieces/Box	Pieces/Bundle
XS	40.00	12.00	60.00	4.80000	5.82000	20	1
S	40.00	12.00	60.00	4.80000	5.82000	20	1
M	40.00	12.00	60.00	4.80000	5.82000	20	1
L	40.00	12.00	60.00	4.80000	5.82000	20	1
XL	40.00	12.00	60.00	4.80000	5.82000	20	1