




About

- Fashion cargo trousers.
- No label for limitless customisation.
- Perfectly smooth surface for optimum customisation.

97 % organic cotton / 3 % elastane. Twill fabric. Faded look. Waistband with belt loop and waistband inner finished with a contrasting chain stitch. Button waistband and recycled metal zip fly with inner waistband button for extra hold. Two front pockets and a hidden pocket with invisible zip in the pocket bag on the wearer's right. Fob pockets with flap and recycled plastic button on the sides. Two back pockets with flap, piped opening and recycled plastic button. Rib stitching on the front and back for reinforcement. Single over stitching on the leg hem. Garment dyed as a whole after assembly: colours may vary between products. The colour may rub off on contact with light surfaces or clothing.

 250 g/m² 

Sizes

 8 UK (34 FR) 10 UK (36 FR) 12 UK (38 FR) 14 UK (40 FR) 16 UK (42 FR) 18 UK (44 FR) 20 UK (46 FR)

More information

Logistic

 1

Country of origin

 20



BD - Bangladesh

Customs code



61046200

Certifications



Organic
Certified by Ecocert Greenlife,
EGL N°1955651 / NATIVE SPIRIT

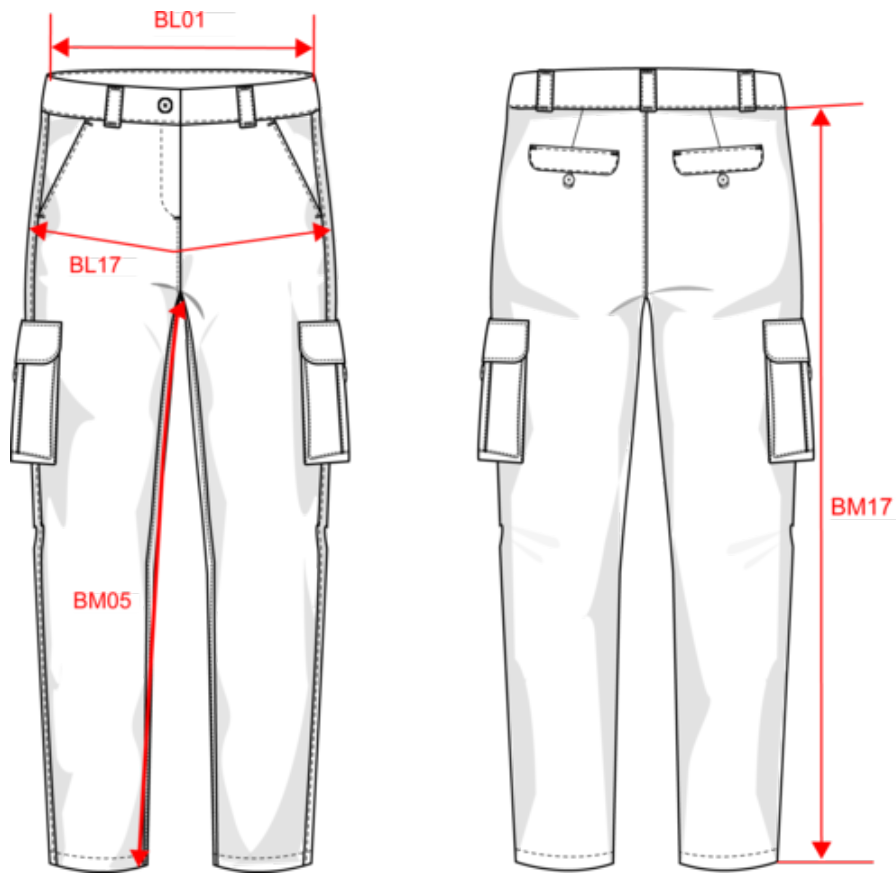


Colours

 Washed black

 Washed Organic Khaki

Dimensions (cm)



Measurements in cm	34 FR	36 FR	38 FR	40 FR	42 FR	44 FR	46 FR
BL01 - 1/2 waist width (buttoned up and front band over back band)	34.50	36.50	38.50	40.50	42.50	44.50	46.50
BL17 - 1/2 hip width (measured parallel to waistband)	47.50	49.50	51.50	53.50	55.50	57.50	59.50
BM05 - Inseam length	78.00	78.00	78.00	78.00	78.00	78.00	78.00
BM17 - Side length (waistband excluded)	99.00	99.50	100.00	100.50	101.00	101.50	102.00

NS741

Eco-friendly ladies' washed effect cargo trousers

Colours information

Washed black
 RVB : 43,39,42
 Pantone C : Neutral Black
 Pantone TCX : 19-4008TCX

Washed Organic Khaki
 RVB : 85,89,77
 Pantone C : 418C
 Pantone TCX : 19-0312TCX

Logistic



1



20

Sizes	Width (cm)	Height (cm)	Length (cm)	Net weight (kg)	Gross weight (kg)	Pieces/Box	Pieces/Bundle
34 FR	40.00000	24.00000	60.00000	8.60000	10.30000	20	1
36 FR	40.00000	24.00000	60.00000	9.10000	10.80000	20	1
38 FR	40.00000	24.00000	60.00000	9.40000	11.10000	20	1
40 FR	40.00000	24.00000	60.00000	9.90000	11.60000	20	1
42 FR	40.00000	26.00000	60.00000	10.50000	12.20000	20	1
44 FR	40.00000	26.00000	60.00000	10.90000	12.60000	20	1
46 FR	40.00000	26.00000	60.00000	11.20000	12.90000	20	1