



About

- Contains merino wool, a noble material.
- Fashionable "balloon" sleeves.
- Regular fit.

50 % organic cotton / 50 % RWS Responsible Merino wool.
*Responsible Wool Standard. Combed cotton. 5 gauge. Comfort fit and « balloon » sleeves. 1 x 1 rib neckline, cuffs and bottom hem. « Fully Fashion » knit. Average weight in size M: 600g.



Sizes



More information

Logistic



5



10



Country of origin

BD - Bangladesh

Customs code



61102099

Colours



Ivory



Navy
Blue

Certifications



Contains 50% GOTS certified Organic Cotton.
Certified by Ecocert Greenlife in accordance
with the GOTS standard available at
<https://www.ecocert.org/>
EGL N°160551 / NATIVE SPIRIT

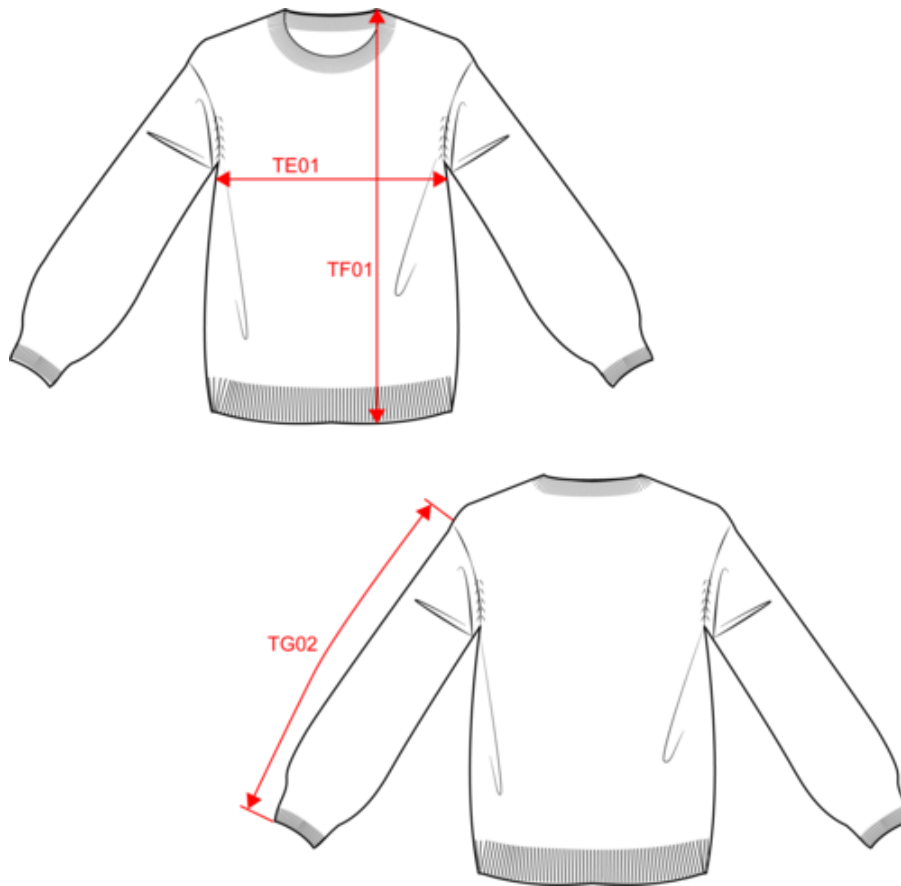


Contains 50% RWS certified Wool.
Certified by Ecocert Greenlife in accordance
with the RWS standard available at
<https://www.ecocert.org/>
EGL N°160551 / NATIVE SPIRIT



NS920
Eco-friendly ladies' merino wool jumper

Dimensions (cm)



Measurements in cm	XS	S	M	L	XL
TE01 - 1/2 chest width at 1.5cm below armhole	50.00	53.00	56.00	59.00	62.00
TF02 - Total height from HSP (binding included)	56.00	58.00	60.00	62.00	64.00
TG02 - Long sleeve length	45.00	46.00	47.00	48.00	49.00

NS920
Eco-friendly ladies' merino wool jumper

Colours information



Ivory
RVB : 236,231,218
Pantone C : 7534C
Pantone TCX : 11-0701TCX



Navy Blue
RVB : 41,45,57
Pantone C : 433C
Pantone TCX : 19-4010TCX

Logistic



5



10

Sizes	Width (cm)	Height (cm)	Length (cm)	Net weight (kg)	Gross weight (kg)	Pieces/Box	Pieces/Bundle
XS	40.00000	40.00000	60.00000	5.40000	7.40000	10	5
S	40.00000	40.00000	60.00000	5.90000	7.90000	10	5
M	40.00000	40.00000	60.00000	6.43000	8.43000	10	5
L	40.00000	40.00000	60.00000	6.97000	8.97000	10	5
XL	40.00000	40.00000	60.00000	7.54000	9.54000	10	5